

Identification:

Name : Universal Durban
 Flag : Malta
 Homeport : Valetta
 Build : 2012
 Call sign : 9HA3061
 IMO number : 9644251
 Class / register number : CCS / 12Y0220

Principal dimensions:

Length over all : 159,60 m
 Length b.p.p. : 149,80 m
 Breadth mld. : 24,40 m
 Depth maindeck : 14,00 m
 Draught : 9,80 m
 Air draught from Keel : approx 40 m
 Design speed : 13,0 kn
 Range, approx : 15.000 nm

Type

Single deck, double hull, grabs fitted, bulk carrier

Tonnage

Deadweight
 Summer SW 9,80 m 22.844 t
 Winter SW 9,60 m 22.149 t
 TPC : 34,0 t/cm
 Gross Tonnage : 15.732 GT
 Nett Tonnage : 7.660 NT
 Suez : 14.399 NT
 Panama : 13.180 NT

Classification:

CCS
 CSA Bulk carrier, Double side skin, CSR, Ice class B,
 Strengthened for heavy cargo's [tanktop 200 kN/m²], Grab [18],
 In-water survey, Loading Computer(S,I,G,D) ESP, CSM, FTP,
 AUT-0

Hatch dimensions

Hatch 1 : ± 21,0 m x 13,0 m
 Hatch 2 : ± 21,0 m x 15,0 m
 Hatch 3 : ± 21,0 m x 15,0 m
 Hatch 4 : ± 21,0 m x 15,0 m

All cargo holds are provided with four hydraulic folding steel covers. Underside closed.

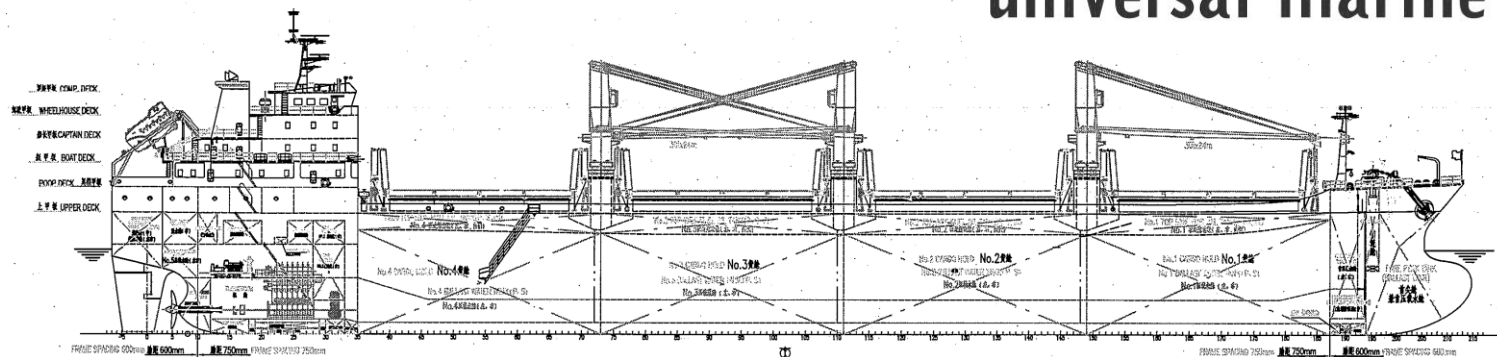
Permissible Loads

Tanktop : 20 t/m²

mv Universal Durban



universal marine

**Hold capacities**

Hold	Grain	Bale
Hold 1	6564 m ³	m ³
Hold 2	7988 m ³	m ³
Hold 3	7975 m ³	m ³
Hold 4	7357 m ³	m ³
total	29.886 m ³	

Cargo holds volumes (estimated)

Hold	Tanktop floorspace, l x b fore/aft	total m ²
Hold 1	± 23,4 m x 3,8 / 19 m	368
Hold 2	± 27,6 m x 19,2 / 21,8 m	604
Hold 3	± 27,6 m x 21,8 / 19,6 m	612
Hold 4	± 27,6 m x 19,4 / 10 m	422

Cargo Features

Open Hatch	: no
Box Shaped	: no
Double hull	: yes
Tweendeck	: no
Cells	: no
Grain fitted	: yes grain manholes in hatches
Logs fitted	: no
Grabs	: yes
Co2 holds	: yes
Ventilation	: yes mechanical, 6 changes/hour
Australia	: yes hold & cranes entrances

Cargo Gear

Number	: 3
SWL	: 30 ton
Radius	: 4,5 / 24 m
Hoisting speed	: 19-50 m/min
Lowering speed	: 50 m/min

Grabs

number	: 3 pcs
size	: 6-10 m ³

Transportable Goods

For dangerous goods see certificate / cargo list

Consumption

Main engine and generator plant running on HFO IFO 380 cst at 50 deg. C. Specific consumption of M.E. is 178 g/kWh (C.V. 42700 Kj/kg). Fuel according to ISO 8217-2010.
 abt 12.6 knots at abt 18.0 mt / day, loaded
 abt 10.5 knots at abt 13.0 mt / day, loaded ECO
 abt 13.5 knots at abt 18.0 mt / day, in ballast
 Auxiliaries
 At sea abt 1.5 mt/day
 In port abt 2.3 mt/day
 In port crane operation abt 3.5 ton/day HFO

Tank Capacities (100%)

Waterballast	: abt. 8440 m ³
Freshwater	: abt. 300 m ³
Bunkers IFO380	: abt. 1300 m ³
GasOil (LS SECA)	: abt. 168 m ³
LubricationOil	: abt. 70 m ³

Propulsion:

1 Main engine, Man B&W 7S35MC
 MCR 5180 kW at 173 rpm
 1 Fixed pitch propeller

Auxiliary Equipment:

3 Diesel generator sets 440 kW 60 Hz, 900 rpm
 1 Emergency/Harbour gen. set, 132 kW, 60 Hz
 1 Steam generating plant

All data to be believed correct. No rights can be obtained from this datasheet