

Principal dimensions:

Length over all	:	189,99	m
Length b.p.p.	:	185,00	m
Breadth mld.	:	32,26	m
Depth maindeck	:	18,00	m
Draught (design)	:	11,30	m
Airdraught from Keel	:	± 46	m
Design speed	:	13,5	kn
Range, approx	:	18.000	nm

Type

Single Hull, single deck, grabs fitted, bulk carrier

Tonnage

Deadweight				
Summer SW	12,80	m	56.728	t
Winter SW	12,50	m	55.157	t
TPC			58,8	t/cm
Gross Tonnage	:		33.042	GT
Nett Tonnage	:		19.132	NT
Suez	:		33.804	NT
Panama	:		27.412	NT

Classification:

Germanischer Lloyd

☒ 100A5 Bulk carrier CSR Grab(20) ESP IW BWM DBC BC-A,
Holds No.2 and No. 4 may be empty
+ MC AUT

Flag

The vessel will sail under the flag of Luxembourg/Malta

Hatch dimensions

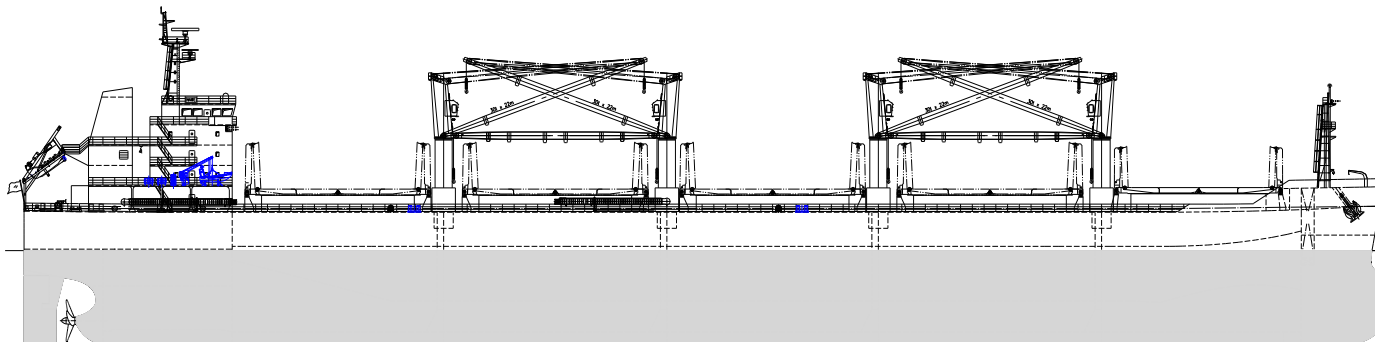
Hatch 1	:	±	18,8 m x 18,2 m
Hatch 2	:	±	21,3 m x 18,2 m
Hatch 3	:	±	21,3 m x 18,2 m
Hatch 4	:	±	21,3 m x 18,2 m
Hatch 5	:	±	21,3 m x 18,2 m

All cargo holds are provided with four hydraulic folding steel covers. Underside closed.

Hold capacities

	Grain	Bale	
Hold 1	:	13.009 m3	m3
Hold 2	:	15.333 m3	m3
Hold 3	:	14.553 m3	m3
Hold 4	:	15.333 m3	m3
Hold 5	:	13.404 m3	m3
Tanktop floorspace, l x b fore/aft			
Hold 1	:	±	27,8 m x 6,8 / 23,5 m
Hold 2	:	±	28,6 m x 23,5 m
Hold 3	:	±	26,8 m x 23,5 m
Hold 4	:	±	28,4 m x 23,5 m
Hold 5	:	±	25,4 m x 23,5 / 12,2 m

Universal Barcelona

**Permissible Loads**

Tanktop, hold 1,3,5	:	25	t/m2
Tanktop, hold 2,4	:	18	t/m2

Cargo Features

Open Hatch	:	no	
Box Shaped	:	no	
Double hull	:	no	
Tweendeck	:	no	
Cells	:	no	
Grain fitted	:	yes	grain manholes in hatches
Logs fitted	:	no	
Grabs	:	yes	
Co2 holds	:	yes	
Ventilation	:	yes	natural
Australia	:	yes	stairs hold & cranes comply

Dangerous Goods

For details see certificate / cargo list

Cargo Gear

Number	:	4
SWL	:	30 ton
Radius	:	5,0 / 28 m
Hoisting speed	:	22 (30t) – 44 (12t) m/min
Lowering speed	:	m/min
Grabs		
number	:	4 pcs
size	:	15 t 6-13 m3

Consumption

Mainengine and generator plant running on HFO IFO 380 cst at 50 deg. C. Specific consumption of M.E. is 171 g/kWh + 5% (C.V. 42700 Kj/kg). Fuel according to ISO 8217-2005.

Abt 13,5 knots at abt 32.0 mt / day, loaded

Abt 12,0 knots at abt 22.0 mt / day, ECO loaded *)

Abt 14,0 knots at abt 32.0 mt in ballast

Auxiliaries

At sea abt 2,0 mt/day

In port abt 3,0 mt/day

In port crane operation abt 4,0 ton/day

*) in cold areas extra consumption for boiler

Tank Capacities (100%)

Waterballast	:	abt.	16.300	m3
Freshwater	:	abt.	465	m3
Bunkers IFO380	:	abt.	2.260	m3
GasOil (LS SECA)	:	abt.	145	m3
LubricationOil	:	abt.	123	m3

Propulsion:

1 Main engine, Man –B&W 6S50MC-C (mark 7)

MCR 9480 kW at 127 rpm

1 Fixed pitch propeller

Auxiliary Equipment:

3 Diesel generator sets 600 kW 60 Hz, 900 rpm

1 Emergency/Harbour gen. set, 99 kW, 60 Hz (running MGO)

1 Steam generating plant

1 Steering gear rotary vane type

All data to be believed correct. No rights can be obtained from this datasheet