

# 10.000 tdw



# universal marine

### Principal dimensions:

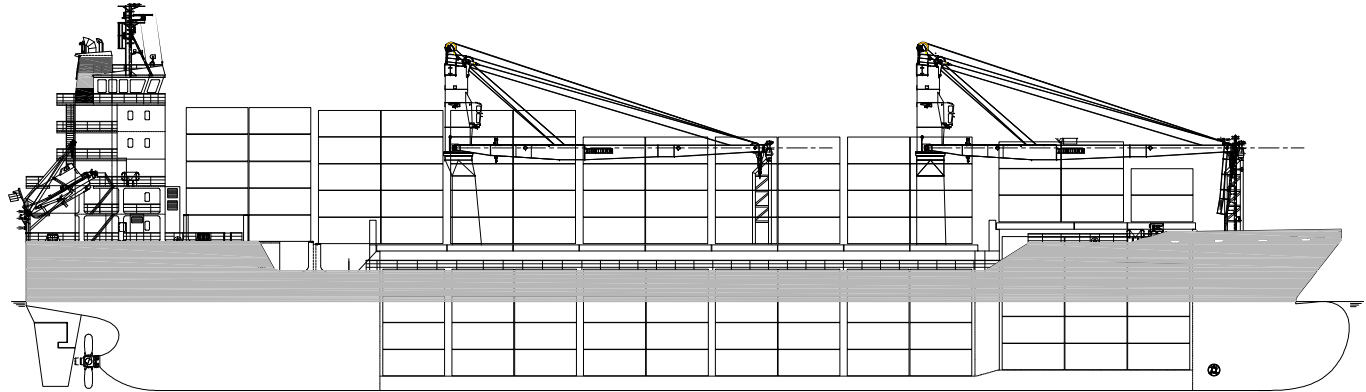
Length over all	:	126,65	m
Length b.p.p.	:	120,60	m
Breadth mld.	:	19,00	m
Depth maindeck	:	11,65	m
Design Draught	:	8,50	m
Scantling draught	:	8,70	m
Airdraught from Keel	:	38	m
Speed at design draught	:	16	kn
Range, approx	:	10000	nm

### Tonnage

Deadweight at 7,30 mtr	:	±	10.700 t
Gross Tonnage	:	±	8.800 GT
Nett Tonnage	:	±	4.000 NT

### Classification:

Germanischer Lloyd  
⊗ 100 A5 G IW, "SOLAS II-2, Reg 19"  
"equipped for carriage of heavy cargo & containers"  
⊗ MC AUT  
Flag : Luxembourg



### Container Intake: (within IMO visibility 2 x vessel length)

	Holds	Deck	Total	+TEU	+FEU
TEU 20'x8'x8'6"	272	404	676	-	-
FEU 40'x8'x8'6"	116	189	305	40	-

### Highcubes

Holds 1	:	4 tiers 9'6" or 5 tiers 8'6"
Holds 2	:	4 tiers 9'6"

### Reefers connections

Deck	:	60
------	---	----

### Stackweights

Holds	20'	40'
Holds	96	120
Hatches	51	65
Tweendeck	48	61

### Stability

VCG 45%, 20'x8'x8'5" @ 14 ton	:	± 367 TEU
-------------------------------	---	-----------

### Permissible Load

Tanktop	:	18	t/m2
Tweendeck	:	4,0	t/m2
Hatchcovers	:	2,0	t/m2
Wheatherdeck	:	2,5	t/m2

### Dangerous Goods

Hold 1 *)	:	class 1.4, 2, 3, 4, 5.1, 6.1, 8, 9
Hold 2 *)	:	class 5.1
Deck *)	:	all classes

\*) for restrictions, see certificate

### Holds / Hatches

Hatch 1	:	±	18,90 m x 15,60 / 10,15 m
Hatch 2 - 5	:	±	58,22 m x 15,60 m
Height Hold 1	:		12,05 m
Height Hold 2	:		13,60 m
Capacity Grain/Bale	:	±	488.000 cbft

All cargo holds are provided with Steel pontoon covers, sequential opening.  
CO2 fire fighting system in engine room and cargo holds  
Vessel's holds are electrically ventilated, 2 air changes/h based empty hold 2. (6 changes Hold 1)

### Tweendeck

Hold 1, 3 steel pontoons. 1 position.  
Hold 2, 9 steel pontoons. 2 positions.  
4 pontoons can make 2 separation bulkheads

Clear heights between	tt-tw	td-hatch
Hold 1	4,75 m	6,80 m
Hold 2, Lower position	5,35 m	5,85 m
Hold 2, Higher position	7,90 m	3,30 m

### Cargo Gear

Number	:	2
SWL	:	60 ton @ 16,0 m, 40 ton @ 28,5 mtr

### Speed and Consumption

At draught 8,50 mtr, even keel, smooth sea, max 2 bft,  
14 kn 60 % MCR ± 17 ton/day, IFO 380, no PTO  
15 kn 70 % MCR ± 20 ton/day, IFO 380, no PTO  
16 kn 85 % MCR ± 23 ton/day, IFO 380, no PTO  
Harbour consumption generator ± 1,8 ton/day MDO  
Fuel according to ISO 8217

### Tank Capacities

Waterballast	:	abt.	4450	t
Freshwater	:	abt.	150	t
Bunkers IFO380	:	abt.	890	t
GasOil	:	abt.	200	t

### Propulsion:

1 Main engine, MaK 6M43, MCR 6000 kW at 500 rpm  
1 Reduction gear  
1 Controllable pitch propeller

### Auxiliary Equipment:

3 Diesel generator sets 400 kW 60 Hz,  
1 Shaft generator 700 kW, 60 Hz  
1 Emergency/Harbour gen. set, 100 kW, 60 Hz  
1 Exhaust gas (thermal oil) boiler & 1 Fired boiler  
1 Electrically-driven bowthruster unit with CPP, 500 kW;  
1 Electro-hydraulic steering gear