

**Principal dimensions:**

Length over all	:	189,99	m
Length b.p.p.	:	185,00	m
Breadth mld.	:	32,26	m
Depth maindeck	:	18,00	m
Draught (design)	:	11,30	m
Airdraught from Keel	:	± 46	m
Design speed	:	14,2	kn
Range, approx	:	18.000	nm

# 57.000 tdw

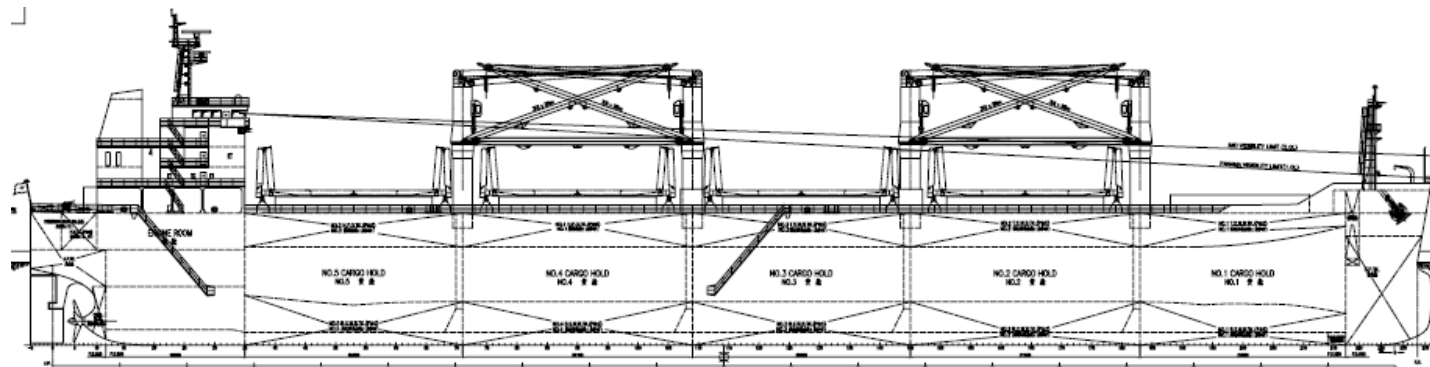
universal marine

**Type**

Single deck, grabs fitted, bulk carrier

**Tonnage**

Deadweight			
Summer SW ± 12,80	m	± 57.000	t
Winter SW ± 12,50	m	± 55.350	t
TPC		± 54,00	t/cm
Gross Tonnage	:	± 32.300	GT
Nett Tonnage	:	± 18.700	NT
Suez	:	tba	NT
Panama	:	tba	NT

**Classification:**

Germanischer Lloyd

α 100A5 Bulk carrier CSR Grab(20) ESP IW BWM DBC BC-A,

Holds No.2 and No. 4 may be empty

α MC AUT

**Flag**

The vessel will sail under the flag of Cyprus / Antigua

**Hatch dimensions**

Hatch 1	:	±	18,8 m x 18,2 m
Hatch 2	:	±	21,0 m x 18,2 m
Hatch 3	:	±	21,0 m x 18,2 m
Hatch 4	:	±	21,0 m x 18,2 m
Hatch 5	:	±	21,0 m x 18,2 m

All cargo holds are provided with four hydraulic folding steel covers. Underside closed.

**Hold capacities**

	Grain	Bale
Hold 1	: ± 11.500 m3	± 0000 m3
Hold 2	: ± 15.800 m3	m3
Hold 3	: ± 15.000 m3	m3
Hold 4	: ± 15.800 m3	m3
Hold 5	: ± 13.400 m3	m3
Tanktop floorspace, l x b fore/aft		
Hold 1	: ± 27,8 m x 7,0 / 23,6 m	
Hold 2	: ± 28,7 m x 23,8 m	
Hold 3	: ± 27,0 m x 23,8 m	
Hold 4	: ± 28,7 m x 23,8 m	
Hold 5	: ± 25,4 m x 23,8 / 12,2 m	

**Permissible Loads**

Tanktop, hold 1,3,5	:	25	t/m2
Tanktop, hold 2,4	:	18	t/m2

**Cargo Features**

Open Hatch	:	no	
Box Shaped	:	no	
Double hull	:	no	
Tweendeck	:	no	
Cells	:	no	
Grain fitted	:	yes	grain manholes in hatches
Logs fitted	:	no	
Grabs	:	yes	
Co2 holds	:	yes	
Ventilation	:	yes	natural
Australia	:	yes	stairs hold & cranes comply

**Dangerous Goods**

For details see certificate / cargo list

**Cargo Gear**

Number	:	4
SWL	:	30 ton
Radius	:	5,0 / 28 m
Hoisting speed	:	22 (30t) – 44 (12t) m/min
Lowering speed	:	XX m/min
Grabs		
number	:	4 pcs
size	:	15 t 6-13 m3

**Consumption**

Mainengine and generator plant running on HFO IFO 380 cst at 50 deg. C. Specific consumption of M.E. is 171 g/kWh + 5% (C.V. 42700 KJ/kg). Fuel according to ISO 8217-2005.

Abt 14,2 knots at abt 37.0 mt / day, CSR, loaded (theoretic value)  
Abt 14,9 knots in ballast (T=6,6 m)In port / at sea abt 3 ton/day HFO  
In port crane operation abt 6,5 ton/day HFO**Tank Capacities**

Waterballast	:	abt.	15.500	t
Freshwater	:	abt.	400	t
Bunkers IFO380	:	abt.	2.200	t
GasOil	:	abt.	120	t
LubricationOil	:	abt.	xx	t

**Propulsion:**

1 Main engine, Man –B&amp;W 6S50MC-C (mark 7)

MCR 9480 kW at 127 rpm

1 Fixed pitch propeller

**Auxiliary Equipment:**

3 Diesel generator sets 600 kW 60 Hz, 900 rpm

1 Emergency/Harbour gen. set, 99 kW, 60 Hz (running MGO)

1 Steam generating plant

1 Steering gear rotary vane type