

Caribbean Sea



Principal dimensions:

Length over all	:	182,52	m
Length b.p.p.	:	173,54	m
Breadth mld.	:	25,20	m
Depth maindeck	:	14,20	m
Design Draught	:	9,50	m
Draught Scantling	:	10,00	m
Airdraught from Keel	:	42,90	m
Speed 90% MCR, design	:	19,9	kn
Range	:	± 12000	nm

Tonnage

Deadweight at 10,00 mtr	:	± 23850	t
Deadweight at 9,50 mtr	:	± 21850	t
Gross Tonnage	:	18017	GT
Nett Tonnage	:	8666	NT

Classification:

Germanischer Lloyd
 α 100 A5 E, "Containership",
 "SOLAS II-2, Reg 19", IW, NAV-0
 α MC E AUT

Flag : Netherlands

Container Intake: (within IMO visibility 2 x vessel length)

	Holds	Deck	Total	+TEU	+FEU
TEU 20'x8'x8'6"	656	872	1528	-	+80
FEU 40'x8'x8'6"	315	508	823	+26	-
45'x8'x8'6"	-	254	254	+168	

Highcubes

Holds : 3 tiers 9'6" (+2 tiers 8'6")

Reefers

Hold	130
Deck	170

Stackweights

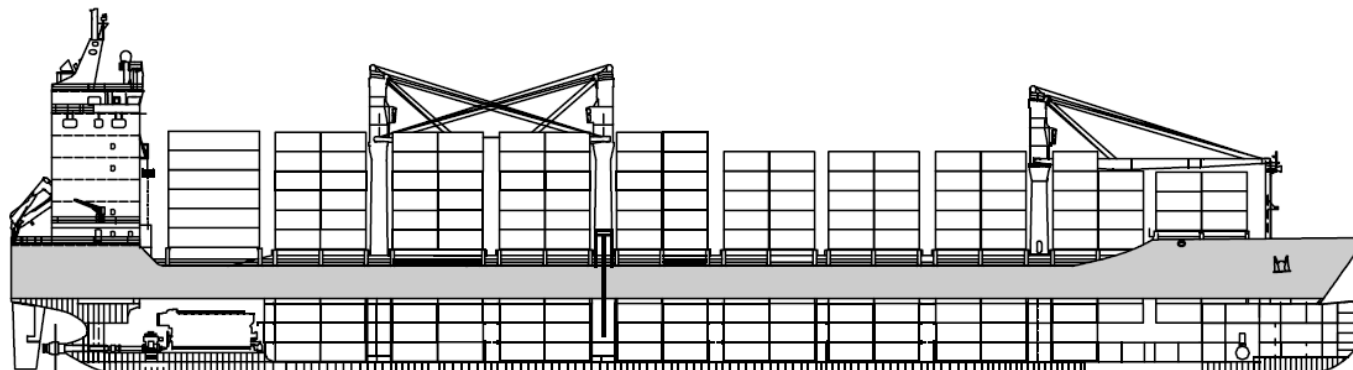
	20'	40'
Holds	120 *)	150
Hatch 1	40	60
Hatches	60	90
Maindeck aft		90

*) see CSM for limitations

Stability

VCG 45%, 20'x8'x8'5",

12 ton	:	1294 TEU
14 ton	:	1234 TEU
16 ton	:	1150 TEU



Dangerous Goods

All Holds *)	:	class 1.4S, 2, 3, 4, 5, 6, 8, 9
Deck	:	all classes (except 7)
Above ER *)	:	class 5, 6, 8, 9

*) for restrictions, see certificate

Tank Capacities

Waterballast	:	±	8600	m3
Freshwater	:	±	150	m3
Bunkers IFO380	:	±	1670	m3
GasOil	:	±	70	m3

Holds / Hatches

Hatch 1	:	±	12,56 m x 15,33 m
Hatch 2	:	±	12,56 m x 20,49 / 15,33 m
Hatch 3-9	:	±	12,68 m x 22,60 m

Pontoon hatchcovers. 2 pontoons per hatch.
 Pontoon can be handled non-sequential.
 Heaviest pontoon, 32 ton, excl twistlocks.

CO2 fire fighting system in engine room and cargo holds
 Vessel's holds are electrically ventilated, 4.000 m3/h per reefer.
 And/or 2 air changes/h based empty hold.

Holds / Hatches

type	:	Wire luffing
number	:	3
SWL	:	45 ton @ 25 m ; 40 ton @ 28 m

Propulsion:

- 1 Main engine, MAN B&W 9L 58/64, MCR 12600 kW, 428 rpm
- 1 Reduction gear
- 1 Controllable pitch propeller

Speed and Consumption

At draught 9,50 mtr, even keel, smooth sea, max 2 bft,
 17,0 kn Eco Speed ± 40 ton/day, IFO 380, no PTO
 18,0 kn Optimum ± 45 ton/day, IFO 380, no PTO
 19,0 kn Full Speed ± 54 ton/day, IFO 380, no PTO
 Fuel according to ISO 8217, net specific energy 42,7 MJ/kg.

Auxiliary Equipment:

- 3 Diesel generator sets 1050 kW 60 Hz, IFO 380
- 1 Shaft generator 1000 kW, 60 Hz
- 1 Emergency/Harbour gen. set, 176 kW, 60 Hz, MDO-DMB
- 1 Electrically-driven bowthruster unit, 950 kW;

		Without PTO	Incl. PTO
At sea	No reefers	4,9 t ± 5%	0 t
	50% reefers	10,1 t ± 5%	5,3 t ± 5%
	100% reefers	15,4 t ± 5%	10,5 t ± 5%
In port	No reefers	1,2 t ± 5%	+2,8 t for boilers
	Incl cranes SF 0,5	5,6 t ± 5%	+2,8 t for boilers
	Incl cranes SF 1	7,3 t ± 5%	+2,8 t for boilers